



**Electoral Commission**  
QUEENSLAND

# 2024 Inala and Ipswich West State By-Elections Report

## Acknowledgement of Country

*The Electoral Commission of Queensland acknowledges the Traditional Owners of Country and their connection to land, sea and community. We pay our respects to Elders past and present.*

## Interpreter services

The Electoral Commission of Queensland is committed to providing accessible services to Queenslanders from all culturally and linguistically diverse backgrounds. If you have difficulty understanding the elections report, you can contact us on 1300 881 665 and we will arrange an interpreter to effectively communicate the document to you.



## Copyright

© Electoral Commission of Queensland 2024

## Licence

This election report is licensed by the Electoral Commission of Queensland under a Creative Commons Attribution (CC BY) 4.0 International licence.



In essence, you are free to copy, communicate and adapt this document, as long as you attribute the work to the Electoral Commission of Queensland. To view a copy of this licence, visit <http://creativecommons.org/licenses/by/4.0/>

Content from this document should be attributed as the Electoral Commission of Queensland 2024 Inala and Ipswich West State By-Elections Report. This report is available to download from the ECQ website [www.ecq.qld.gov.au](http://www.ecq.qld.gov.au).

Enquiries and requests for a paper copy of this document may be directed to:

### **Electoral Commission of Queensland**

Telephone: 1300 881 665  
Website: [www.ecq.qld.gov.au](http://www.ecq.qld.gov.au)  
Email: [ecq@ecq.qld.gov.au](mailto:ecq@ecq.qld.gov.au)  
Post: GPO Box 1393  
BRISBANE QLD 4001

# Contents

Introduction .....	1
Inala State by-election snapshot.....	2
Ipswich West State by-election snapshot.....	3
By-elections timetable .....	4
Voter Services .....	5
Enrolment.....	5
Nominations.....	5
Election day voting .....	6
Early voting.....	8
Postal voting.....	8
Telephone voting.....	9
Election staff .....	9
Accessibility services .....	10
Communication and awareness .....	11
Website .....	11
Voting centres and office premises.....	11
Service centre .....	12
Waste management .....	12
Feedback and complaints.....	12
Election results .....	13
Compliance services .....	14
Electoral participant compliance .....	14
Election summary returns.....	14
Election funding claims.....	14
Voter compliance .....	15
Review of informal ballot papers.....	16
Methodology .....	16
Inala informality review .....	18
Ipswich West informality review .....	19
Conclusions.....	20
Appendices .....	21

13 September 2024



The Honourable Yvette D'Ath MP  
Attorney-General and Minister for Justice  
Minister for the Prevention of Domestic and Family Violence  
1 William Street  
BRISBANE QLD 4000  
Email: [attorney@ministerial.qld.gov.au](mailto:attorney@ministerial.qld.gov.au)

Dear Attorney-General

On behalf of the Electoral Commission of Queensland, I am pleased to submit for presentation to the Queensland Parliament, the 2024 Inala and Ipswich West State By-elections Report.

In accordance with section 18(2) of the *Electoral Act 1992*, the report details the operation of part 7 of the *Electoral Act* in relation to the by-elections held on Saturday, 16 March 2024.

Yours sincerely

A handwritten signature in black ink, appearing to read "Pat Vidgen".

Pat Vidgen PSM FGIA  
**Electoral Commissioner**

# Introduction

On Saturday, 16 March 2024, the Electoral Commission of Queensland (ECQ) conducted by-elections for the State electoral districts of Inala and Ipswich West.

The delivery of the by-elections coincided with the 2024 local government quadrennial elections, with electors from the two State districts voting for both their State Member of Parliament and council representatives for their local government area.

The by-elections were required following the resignations from Parliament of the then sitting members for Inala and Ipswich West, The Honourable Anastacia Palaszczuk and Mr James Madden, effective from 31 December 2023 and 26 January 2024 respectively.

Her Excellency the Honourable Jeannette Young AC PSM, Governor of Queensland, issued two writs on 30 January 2024. The writs were issued under section 83(1)(b) of the *Electoral Act 1992*, to fill a vacancy that arises when the Legislative Assembly is not sitting.

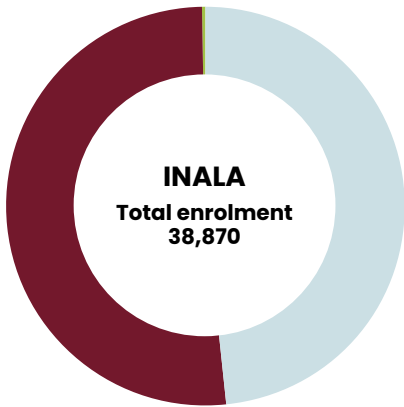
These were the third and fourth by-elections held during the term of the 57<sup>th</sup> Parliament of Queensland, following by-elections for the State electoral districts of Callide in 2022 and Stretton in 2021.

Following the completion of the March 2024 by-elections, Ms Margie Nightingale, Australian Labor Party (State of Queensland), was elected to represent the Inala electorate, and Mr Darren Zanow, Liberal National Party of Queensland, was elected to represent the Ipswich West electorate.

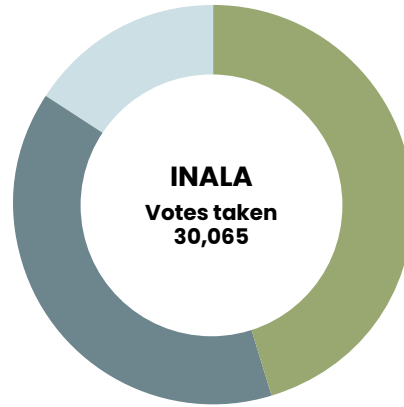
The writs declaring the names of the elected candidates for the Ipswich West and Inala State by-elections were returned to the Governor of Queensland on 22 March 2024 and 27 March 2024 respectively. Notices declaring the election of the candidates and notifying the return of the writs were also published in the Queensland Government Gazette on the date of the writs' return.

A copy of the writs and gazetted notices are available at **Appendix A**.

# Inala State by-election snapshot



**Female** 19,992   **Male** 18,848   **Unspecified** 30



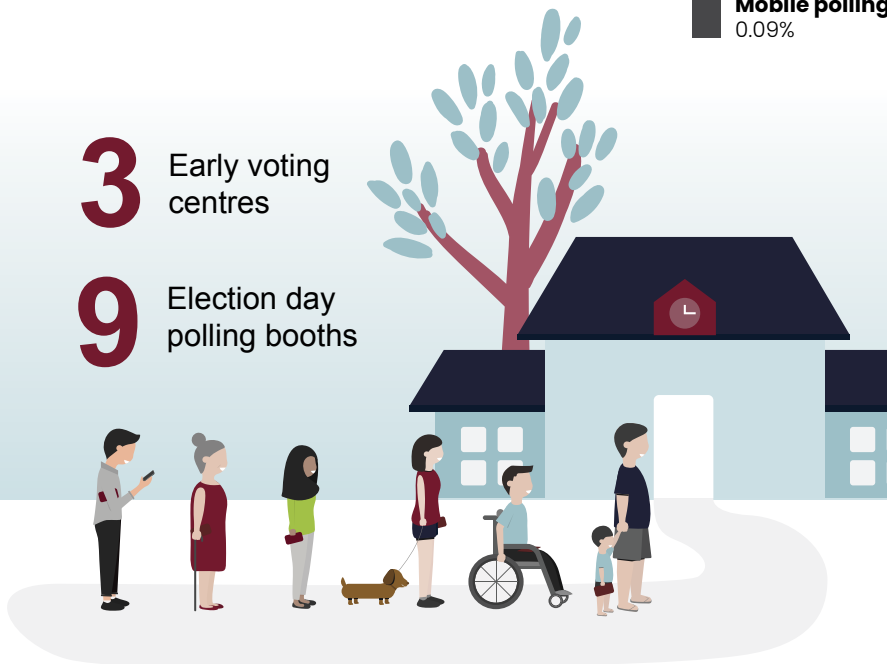
**Election day** 44.87%   **Early voting** 38.31%   **Postal voting** 15.41%  
**Telephone voting** 0.14%   **In person declaration voting** 1.18%  
**Mobile polling** 0.09%

**Voter turnout (%)**  
77.35%

**Informal Votes**  
2,627 (8.74%)

**3** Early voting centres

**9** Election day polling booths



## Candidates in ballot paper order

1. NGUYEN, Linh
2. SIMPSON, Chris
3. NIGHTINGALE, Margie  
AUSTRALIAN LABOR PARTY  
(STATE OF QUEENSLAND)
4. YEN, Trang  
LIBERAL NATIONAL PARTY OF QUEENSLAND
5. QUINLAN, Nigel David  
LEGALISE CANNABIS QLD (PARTY)
6. HERNANDEZ, Nayda
7. SIDHU, Navdeep Singh  
QUEENSLAND GREENS
8. CARROLL, Edward

**Returning Officer (RO):** David Roberts

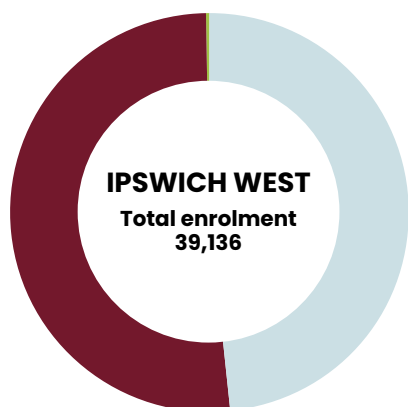
**RO Office:** 99 Kelliher Road,  
Richlands, QLD 4077

**Voting system:** Full preferential voting

**Elected candidate:** Ms Margie Nightingale  
Australian Labor Party (State of Queensland)

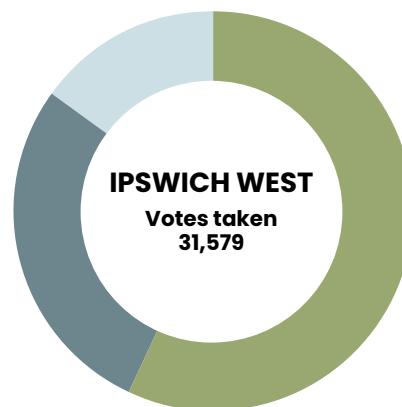
Refer to full distribution of preferences at **Appendix D** and on the ECQ's website.

# Ipswich West State by-election snapshot



**Female** 20,102   **Male** 18,994   **Unspecified** 40

**Voter turnout (%)**  
80.69%

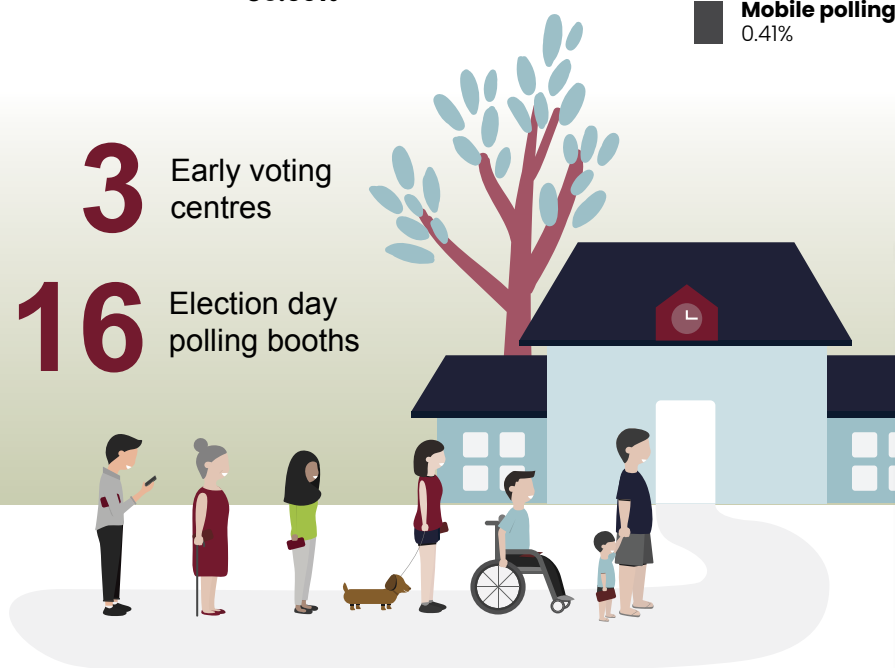


**Election day** 56.04%   **Early voting** 27.53%   **Postal voting** 14.74%  
**Telephone voting** 0.18%   **In person declaration voting** 1.10%  
**Mobile polling** 0.41%

**Informal Votes**  
2,046 (6.48%)

**3** Early voting centres

**16** Election day polling booths



## Candidates in ballot paper order

1. LINDSAY, Melody  
LEGALISE CANNABIS QLD (PARTY)
2. ZANOW, Darren  
LIBERAL NATIONAL PARTY OF QUEENSLAND
3. BONE, Mark Marston  
PAULINE HANSON'S ONE NATION  
QUEENSLAND DIVISION
4. BOURNE, Wendy  
AUSTRALIAN LABOR PARTY  
(STATE OF QUEENSLAND)

**Returning Officer (RO):** Peter O'Sullivan

**RO Office:** 22 Nicholas Street,  
Ipswich, QLD 4305

**Voting system:** Full preferential voting

**Elected candidate:** Mr Darren Zanow  
Liberal National Party of Queensland

Refer to full distribution of preferences at **Appendix D** and on the ECQ's website.

# By-elections timetable

<b>Writs issued</b>	Tuesday, 30 January 2024
<b>Electoral roll closed</b>	Monday, 5 February 2024, 6.00pm
<b>Candidate nominations closed</b>	Tuesday, 13 February 2024, 12.00pm
<b>Ballot paper order draw</b>	Tuesday, 13 February 2024, 2.00pm
<b>Postal voting application period</b>	Start: Tuesday, 30 January 2024 End: Monday, 4 March 2024, 7.00pm
<b>Early voting period</b>	Start: Monday, 4 March 2024, 9.00am End: Friday, 15 March 2024, 6.00pm
<b>Electronically assisted voting period (telephone voting)</b>	Start: Monday, 4 March 2024, 9.00am End: Saturday, 16 March 2024, 6.00pm
<b>How-to-vote card lodgement deadline</b>	Friday, 8 March 2024, 5.00pm
<b>Election day voting</b>	Saturday, 16 March 2024, 8.00am – 6.00pm
<b>Deadline for completing postal votes</b>	Saturday, 16 March 2024, 6.00pm
<b>Deadline for the return of postal votes</b>	Tuesday, 26 March 2024, 6.00pm
<b>Writs returned</b>	Ipswich West – Friday, 22 March 2024 Inala – Wednesday, 27 March 2024
<b>Deadline for filing a challenge to the result</b>	Ipswich West – Friday, 29 March 2024 Inala – Wednesday, 3 April 2024
<b>Last date for return of writs</b>	Monday, 22 April 2024
<b>Deadline for the return of election summary returns</b>	Monday, 1 July 2024



# Voter Services

The by-elections were held concurrently with the 2024 local government quadrennial elections, and the ECQ provided a variety of voting services to encourage and enable eligible electors in the Inala and Ipswich West electoral districts to cast a formal ballot for the by-elections.

The by-elections were both attendance events, with electors able to cast their vote in-person at polling places throughout their electorate during the early voting period and on election day. Alternative voting services, such as postal voting and telephone voting, were also available for electors who applied or registered.

Inala and Ipswich West electors were also required to vote for their local government representatives and the ECQ streamlined its service delivery arrangements to allow electors to be marked off the electoral roll for both events at the same time.

However, conducting State and local government elections simultaneously does create some challenges. Most notably, electors from these districts were required to use multiple voting systems to cast their votes in different electoral contests.

Inala electors:

- ▶ Inala State by-election: full preferential voting
- ▶ Mayor and councillor: optional preferential voting

Ipswich electors:

- ▶ Ipswich West State by-election: full preferential voting
- ▶ Mayor: optional preferential voting
- ▶ Councillors: first-past-the-post voting

## Enrolment

At the close of the electoral roll on Monday, 5 February 2024, the Inala electoral district had 38,870 enrolled electors, and the Ipswich West electoral district had 39,136 enrolled electors.

New enrolments and updates to enrolment details were accepted until 6.00pm Friday, 15 March 2024. Voters who updated their details during this period may have had to complete a declaration vote to enable staff to verify their enrolment or updated information.

## Nominations

Candidate nominations opened on Wednesday, 31 January 2024 and closed at 12.00pm Tuesday, 13 February 2024. Eight candidates nominated to contest the Inala State by-election and four candidates, all endorsed by registered political parties, nominated to contest the Ipswich West State by-election.

Once nominations closed, ballot paper order draws were conducted at 2.00pm on Tuesday, 13 February 2024. In the presence of witnesses, the respective Returning Officer of each electoral district, drew the names of each of the nominated candidates to determine the order in which the candidates' names were to appear on the corresponding ballot paper.

A register of candidates for both State by-elections was prepared in accordance with the *Electoral Act 1992* and published on the ECQ website. The registers are included at **Appendix B**.

A total of 65,941 ballot papers (60,000 ordinary and 5,941 postal) were printed for the Inala State by-election and 65,850 ballot papers (60,000 ordinary and 5,850 postal) were printed for the Ipswich West State by-election. The ballot papers were distributed across early voting centres and election day polling booths, including Brisbane City Hall, to ensure adequate supply of ballot papers at each polling place.

## Election day voting

Historically, election day voting has accounted for the majority of votes cast at Queensland elections. However, the rate of early voting has been increasing over time, and at state wide

elections held in 2020, early voting became the most utilised voting channel.

However, the March 2024 elections saw a reversion to election day voting as the most popular voting option for electors. Approximately 44.87 per cent of voters in the Inala State by-election and 56.04 per cent of voters in the Ipswich West State by-election, cast their ballot on election day.

From 8.00am to 6.00pm on election day, Saturday, 16 March 2024, nine polling booths operated in the Inala electorate and 16 polling booths operated in the Ipswich West electorate. In addition, voting was available at Brisbane City Hall.

Polling booth details are listed below.

Inala election day polling booths			
Location	Venue	Address	Disability access
<b>Brisbane</b>	Brisbane City Hall	64 Adelaide Street Brisbane, QLD 4000	Full
<b>Carole Park</b>	Carole Park State School	260 Waterford Road, Carole Park QLD 4300	Assisted
<b>Durack</b>	Durack State School	69 Inala Avenue Inala QLD 4077	Full
<b>Forest Lake</b>	Forest Lake State School	8 Kauri Place Forest Lake QLD 4078	Full
<b>Forest Lake East</b>	Forest Lake State High School	High Street Forest Lake QLD 4078	Assisted
<b>Forest Lake South</b>	Grand Avenue State School	Cnr Grand Avenue and Centennial Way Forest Lake QLD 4078	Full
<b>Inala</b>	Inala State School	Cnr Rosemary Street and Glenala Road Durack QLD 4077	Full
<b>Richlands East</b>	Richlands East State School	99 Poinsettia Street Inala QLD 4077	Full
<b>Serviceton South</b>	Serviceton South State School	59 Lorikeet Street Inala QLD 4077	Full

## Ipswich West election day polling booths

Location	Venue	Address	Disability access
<b>Brassall</b>	Brassall Congregational Church Hall	3 Jellicoe Street Brassall QLD 4305	Full
<b>Brassall North</b>	Ipswich State High School Hall	1 Hunter Street Brassall QLD 4305	Assisted
<b>Brisbane City Hall</b>	Brisbane City Hall	64 Adelaide Street Brisbane QLD 4000	Full
<b>Grandchester</b>	Grandchester State School	35 School Road Grandchester QLD 4340	Full
<b>Haigslea</b>	Haigslea State School	760 Thagoona Haigslea Road Haigslea QLD 4306	Full
<b>Karalee</b>	Karalee State School Hall	77 Arthur Summervilles Road Karalee QLD 4306	Full
<b>Leichhardt</b>	Leichhardt State School Hall	72 Samford Road Leichhardt QLD 4305	Full
<b>Marburg</b>	Marburg State School	Louisa Street Marburg QLD 4346	Full
<b>North Ipswich</b>	Ipswich North State School Hall	Lawrence Street North Ipswich QLD 4305	Assisted
<b>One Mile</b>	Immaculate Heart Primary School	Chubb Street Leichhardt QLD 4305	Assisted
<b>Pine Mountain</b>	Pine Mountain Hall	840 Pine Mountain Road Pine Mountain QLD 4306	No
<b>Raymond's Hill</b>	St Joseph's School Hall	42 Pine Mountain Road North Ipswich QLD 4305	Assisted
<b>Rosewood</b>	Rosewood State School	School Street Rosewood QLD 4340	Full
<b>Tivoli</b>	Tivoli State School	108 Mt Crosby Road Tivoli QLD 4305	Full
<b>Walloon</b>	Walloon State School	528 Karrabin-Rosewood Road Walloon QLD 4306	Full
<b>Yamanto</b>	Amberley District State School Hall	37 Deebling Creek Road Yamanto QLD 4305	Full

## Early voting

Early voting centres operated for a two-week period between Monday, 4 March and Friday, 15 March 2024 at three venues for the Inala electorate and three venues for the Ipswich West electorate, including Brisbane City Hall.

Early voting was available from 9.00am to 5.00pm every weekday of the two-week period,

except Friday, 15 March 2024, when early voting centres operated from 9.00am to 6.00pm.

Approximately 38.31 per cent of votes in the Inala State by-election and 27.53 per cent of votes in the Ipswich West State by-election, were cast at an early voting centre during this period.

Early voting centre details are listed below.

Inala early voting centres			
Location	Venue	Address	Disability access
<b>Brisbane</b>	Brisbane City Hall	Ann Street Brisbane QLD 4000	Full
<b>Darra</b>	Early Voting Centre	2/18 Sudbury Street Darra QLD 4076	Assisted
<b>Richlands</b>	Returning Officer's Office	99 Kelliher Road Richlands QLD 4077	Assisted

Ipswich West early voting centres			
Venue name	Building name	Address	Disability access
<b>Brisbane</b>	Brisbane City Hall	Ann Street Brisbane QLD 4000	Full
<b>Raceview</b>	Whitehill Church	219 Whitehill Road Raceview QLD 4305	Full
<b>Ipswich</b>	Ipswich City Mall	22 Nicholas Street Ipswich QLD 4305	Full

A polling booth and early voting notice was published on the ECQ website to notify and declare the availability of election day and early voting polling place information. The notice is included at **Appendix B**.

## Postal voting

Voters were able to apply for a postal vote from Tuesday, 30 January until 7.00pm on Monday, 4 March 2024. Printing and despatch of postal vote materials commenced following the ballot paper order draw on Tuesday, 13 February 2024.

There were 5,267 postal votes issued during the Inala by-election, with 4,633 ballot papers

included in the count. This represented 15.41 per cent of votes cast for the Inala by-election. There were 4,805 postal votes issued during the Ipswich-West by-election, with 4,654 ballot papers included in the count. This represented 14.74 per cent of votes cast for the Ipswich West by-election.

## Telephone voting

Electronically assisted voting, commonly known as telephone voting, is a limited service primarily designed for voters who have impairment, live a long distance from polling places or have a low level of literacy, enabling them to cast their vote anonymously via telephone.

For the Inala and Ipswich West State by-elections, certain electors were eligible to cast a telephone vote in accordance with section 121A of the *Electoral Act 1992* and section 4AA of the *Electoral Regulation 2013*. Those eligible for telephone voting at the by-elections were electors who:

- ▶ could not vote without assistance due to an impairment
- ▶ could not vote without assistance due to an insufficient literacy level
- ▶ could not physically vote at a polling place due to an impairment
- ▶ were a registered special postal voter
- ▶ were enrolled at an address more than 20 kilometres from a polling booth
- ▶ could not vote at a polling booth during the voting period for the by-election, and
- ▶ were out of state or classified as an overseas voter, including defence force personnel serving overseas.

The telephone voting process for eligible electors entails two phone calls to separate call centres to maintain the secrecy of the ballot.

In the first call, electors apply to use the service and once deemed eligible, receive a registration number and PIN.

In the second phone call, electors use the registration number and PIN to have their name marked off the electoral roll. During this call, an ECQ officer completes the ballot paper as dictated by the elector, with a second ECQ officer listening and observing to ensure the vote is recorded as per the elector's direction.

Although a resource and time-intensive method of taking votes, telephone voting is designed to enfranchise the community's more vulnerable

members or cater for those with a specific need such as distance voters with limited polling place access or electors with an impairment.

To ensure telephone voting is administered in accordance with legislative requirements, the ECQ must make procedures for electronically assisted voting, which are approved under a regulation and tabled in the Legislative Assembly. The procedures for telephone voting that applied to these by-elections were approved by the Electoral Commissioner on 14 December 2023 and have been published on the [ECQ website](#).

In addition, the ECQ engaged an independent auditor to perform a compliance review of the systems used for telephone voting and provide assurance that the process complies in all material respects with the *Electoral Act 1992*.

At the Inala and Ipswich West State by-elections, eligible electors were able to register to use the telephone voting service from Tuesday, 30 January until 12.00pm on election day, Saturday, 16 March 2024. Electors could then cast their telephone vote during the voting period from Monday, 4 March up until 6.00pm on election day.

At the Inala and Ipswich West State by-elections, 43 and 56 telephone votes were taken respectively. This is a significant decrease when compared with the 2020 State general election, where 115 and 159 telephone votes were cast by Inala and Ipswich West electors respectively.

## Election staff

As the by-elections were delivered concurrently with the local government elections, temporary election staff were employed to support by-election delivery for both election events. These staff were led by Returning Officers who were engaged to manage most aspects of election service delivery, including administering and resourcing venues, processing candidate nominations, conducting the ballot paper order draw and overseeing the conduct of the vote count.



The Returning Officers for the Inala and Ipswich West State by-elections were employed for the 2024 local government elections following a merit-based recruitment exercise undertaken in 2023. The Returning Officer positions for the Forest Lake Ward of Brisbane City Council and the Ipswich City Council were subsequently extended to include responsibility for State by-election delivery.

Additional temporary election staff were also employed to undertake various roles to deliver the by-elections. Applications for additional temporary election roles, supplementing the existing temporary election staff profile for the local government elections, opened on 5 February 2024. The ECQ received 1,104 additional applications to work at the Inala State by-election and 929 applications for the Ipswich West State by-election.

As part of recruitment for the local government elections, the ECQ had proactively contacted people who had previously worked for the ECQ at the 2020 State general election to advise them that applications for the March 2024 elections had opened.

Polling places for local government areas overlapping with State electoral districts were resourced to service electors voting in both the State by-elections and the local government elections.

Polling places were allocated additional early voting staffing hours and election day staffing positions to manage the additional workload associated with the by-elections. Staffing resources for the Inala State by-election were shared with the Forest Lake Ward of the Brisbane City Council election and resources for the Ipswich West State by-election were shared with the Ipswich City Council elections.

All staff who were employed to work at the by-elections and local government elections completed an online training program. Staff in more senior roles also attended face-to-face training. The Returning Officers both attended four days of face-to-face training at ECQ head office, and supervisors and election day senior issuing officers attended three hours of face-to-face training delivered by the Returning Officer at their office.

## Accessibility services

The ECQ provided a variety of services to ensure accessibility at the State by-elections. This included:

- ▶ publishing disability access information for polling places on the ECQ website
- ▶ making translation and interpreter services available for people who speak English as a second language
- ▶ providing a *Multilingual Guide to Voting* which included voting information in 25 languages other than English
- ▶ producing directional posters in English and Vietnamese with the message “You can vote in the Inala State by-election here” for display at polling places in the Inala electorate to promote by-election voting to the large Vietnamese population.

Additionally, at Queensland elections, electors are entitled to request a person join them in the polling booth to assist them to cast their ballot. This person can act as an interpreter, read or explain the ballot paper instructions, or complete the ballot paper according to the elector’s instructions and place the ballot paper in the ballot box.

Declared institution voting is a form of mobile polling where polling officials visit patients and residents of registered declared institutions, such as aged care facilities, to allow them to cast a ballot. Contact was made with the registered declared institutions within the Inala and Ipswich West electoral districts to offer a mobile polling service to residents, especially those in high care, who could not otherwise attend a polling booth.

Mobile polling was carried out at one institution for the Inala by-election and three institutions for the Ipswich West by-election. The details of these institutions were published on the ECQ website and are included at **Appendix B**.

## Communication and awareness

Communication and awareness activities to support the Inala and Ipswich West by-elections were delivered via a multi-channel strategy. This program of work was designed to ensure electors were aware of the elections and had the information required to participate by casting a formal vote. Activities included:

- ▶ delivery of a targeted social media information campaign
- ▶ placement of advertisements in local print media and on digital news websites
- ▶ distribution of stakeholder kits to 15 local community organisations, and
- ▶ delivery of a proactive media strategy targeting print and radio outlets.

The ECQ's social media information campaign comprised of eight Facebook posts published at key stages of the election period which reached 46,443 electors, achieved 46,258 impressions and resulted in 2,649 engagements.

Election information was advertised in local print and online publications including the Courier-Mail and Ipswich Tribune (print) and NewsCorp, Ipswich Tribune and Australian Community Media (online). This advertisement provided election dates and times, polling booth opening hours, postal voting information and receipt deadline and reminders that voting is compulsory. Examples of social media posts and advertisements are at **Appendix C**.

ECQ representatives, including the Electoral Commissioner, gave a number of media interviews throughout the election period, providing information about both the local government elections and the two State by-elections.

Three media releases specifically relating to the Ipswich and Inala West State by-elections were disseminated to journalists across Queensland during the election period, with two releases issued following the declaration of these results.

## Website

The ECQ website provided a range of information to support participation in the by-elections for electors and political participants, including the election timetable, candidate obligations, early voting locations, names of candidates, voting options, election day polling booths and election results.

The Inala and Ipswich West by-elections web page on the ECQ website received 47,279 views over the duration of the election campaign.

The ECQ published pre-election metrics for this by-election, including the number of postal vote applications received, postal votes returned and early voting totals. The figures were updated daily during the election period.

## Voting centres and office premises

As the Inala and Ipswich West State by-elections were held at the same time as the 2024 local government elections, venues for Returning Officer offices, early voting centres and election day polling booths were shared with those that had been selected and leased for the local government areas within these electorates. This ensured electors only had to attend one venue to cast their vote in both elections.

The ECQ selects the most suitable premises available at the time of an election. Venue considerations are extensive and include size, location, accessibility, amenities, street frontage, access for deliveries, internet connectivity, workplace health and safety and availability. The ability to secure premises that meet functional requirements can present challenges, particularly in negotiating agreements to enter short-term leases when the supply of premises is limited.

## Service centre

The ECQ service centre operated throughout the by-elections, offering support to electors to access services or information, respond to enquiries or to take feedback and complaints. The majority of callers phoning the ECQ's 1300 881 665 number, or emailing [ecq@ecq.qld.gov.au](mailto:ecq@ecq.qld.gov.au), received assistance through the ECQ service centre.

Service centre staff assisted with a range of enquiries including:

- ▶ registering electors for telephone voting
- ▶ processing postal vote applications
- ▶ providing information about the different voting services available, and
- ▶ responding to general enquiries and complaints.

During the election period, the service centre was open from 8.00am to 5.00pm on Monday to Friday and operated from 8.00am to 6.00pm on election day. The service centre remained open until 7.00pm on Monday, 4 March 2024, for the close of postal voting applications.

## Waste management

In providing electoral services, wherever possible the ECQ seeks to use paper and cardboard items comprising recycled content and to ensure that the paper and cardboard items are themselves recycled.

For the Inala and Ipswich West State by-elections, standard cardboard items were used in voting centres included voting screens, accessible voting screens, ballot boxes, caution signs and recycle bins. Cardboard is often re-used by schools and community groups before being recycled through their programs.

## Feedback and complaints

Members of the public were able to provide feedback or lodge a customer complaint about ECQ services, actions or decisions via the ECQ's feedback and complaints process.

The ECQ received 14 customer complaints in relation to the 2024 Inala and Ipswich West State by-elections. The categories of the submissions received were:

- ▶ postal voting (1)
- ▶ online postal vote application process (1)
- ▶ in-person voting experience (11), and
- ▶ ECQ staff including Returning Officers, polling place staff and call centre staff (1).

The ECQ responds to general complaints within 15 business days, and where practicable and appropriate, considers any improvements from the feedback received that can be implemented for future elections.

Nous Group was commissioned by the ECQ in November 2023 to evaluate the local government elections and provide recommendations on areas for operational improvements. The scope of this review was expanded in March 2024, with additional consideration of issues experienced on election day.

The report, *Review of Election Day Issues at the 2024 Queensland Local Government Elections*, addresses issues such as wait times at polling places that were experienced by some electors on election day at the 2024 local government elections, noting these issues also impacted some electors participating in the State by-elections.

The ECQ has accepted the report's recommendations and has developed a schedule to implement recommended improvements for the 2024 State general election and future elections. The report and the ECQ's response are available on the ECQ website.



# Election results

Following the close of polling at 6.00pm on election day, Saturday, 16 March 2024, the preliminary count was undertaken. This count provided electors, candidates, parties and other election participants an early indication of the final results.

The official first preference count commenced on Sunday, 17 March 2024.

Following completion of the count of all available ballots, Mr Darren Zanow of the Liberal National Party of Queensland was declared the elected candidate for the electoral district of Ipswich West.

Following the deadline for the return of postal votes, Ms Margie Nightingale of the Australian Labor Party (State of Queensland) was declared the elected candidate for the electoral district of Inala.

The Electoral Commissioner returned the completed writs for the Ipswich West and Inala State by-elections to the Governor of Queensland on Friday, 22 March 2024 and Wednesday, 27 March 2024 respectively. Notices advising of the return of the writs and the names of the elected candidates were published in the Queensland Government Gazette on the date of writ's return.

Both members were sworn into the Queensland Parliament on Tuesday, 16 April 2024.

The ECQ completed an official distribution of preferences count following the deadline for the return of postal votes, to finalise the results. Ms Nightingale received 37.23 per cent of first preference votes and, after the distribution of preferences, received 56.65 per cent of the total vote. Mr Zanow received 39.53 per cent of first preference votes and, after the distribution of preferences, received 53.50 per cent of the total vote.

The first preference count and distribution for preferences for the Inala and Ipswich West State by-election is in **Appendix D**.

# Compliance services

The ECQ carried out compliance and enforcement actions for both by-elections, including ensuring electoral participants were adhering to funding and disclosure obligations.

The ECQ also undertakes enforcement action against those enrolled electors who have failed to vote. These actions promote transparency in the electoral system and incentivise greater electoral participation.

## Electoral participant compliance

The ECQ works closely with candidates, registered political parties, and other election participants, as well as their staff and volunteers, to promote awareness and support compliance with legislative obligations. The ECQ produces a range of resources for these electoral participants including handbooks, fact sheets and guides to explain endorsement, nomination and disclosure requirements.

Two compliance issues attracted significant media attention during the elections.

The first related to a candidate who posted to social media an image of themselves appearing to vote in an electorate for which they were not eligible to vote. Following an investigation by the ECQ, it was determined that the candidate did not cast a vote, but posed for a photo while assisting another elector (who was correctly enrolled in the electorate) to place their ballot in the ballot box. Based on these facts, which were witnessed by the ECQ's election officials in the polling booth, no offence was identified, and no further action was taken.

The second matter related to a how-to-vote card which was distributed by a third party at polling places in Ipswich West. Due to the content of the how-to-vote card, questions were raised about the legality of the card's distribution by the third party.

Candidates and registered political parties must have their how-to-vote cards approved by the ECQ before they can be distributed.

Conversely, third parties may distribute how-to-vote cards without approval from the ECQ, so long as they do not mislead an elector about the ways of voting in an election, such as by directing voters to cast an informal ballot, or to vote in a way which is not permitted.

Consideration may need to be given to reviewing the operation of the how-to-vote card provisions of the *Electoral Act 1992* in the context of modern elections. The provisions pertaining to the lodgement and approval of how-to-vote cards have not been significantly revised since 2002 and do not appear to consider issues such as the increase in early voting or campaign activities of third parties. Comparatively, the *Local Government Electoral Act 2011* was significantly revised in 2019 to address the early voting issue.

## Election summary returns

All political parties, candidates, associated entities and registered third parties submitted an election summary return by the due date of 1 July 2024. Upon receipt of returns, the ECQ conducts examinations of the returns to assess compliance with the political donation cap, electoral expenditure cap and other funding and disclosure obligations.

## Election funding claims

Applications for election funding were due to be submitted by 5 August 2024. All five registered political parties which contested the State by-elections have submitted a claim, as well as the two independent candidates who became eligible to make a claim. Claims are being examined as at September 2024.

For these by-elections, political parties were entitled to claim a maximum of \$6.445 per formal first preference vote received, while candidates were entitled to claim a maximum of \$3.223 per formal first preference vote.

## Voter compliance

Voting is compulsory in Queensland, and it is an offence for an elector to fail to cast a vote without a valid and sufficient reason. Following the March elections, the ECQ commenced a non-voter compliance program to identify and communicate with individuals who appeared to have failed to vote, with the aim of reinforcing the importance of voting and encouraging participation at future elections.

Relevant compliance action is being undertaken as part of the non-voter program for the 2024 local government elections. Notices were sent to individuals who appear to have failed to vote at the March elections in July 2024.

The apparent failure to vote notice provides several opportunities for recipients to contact the ECQ and provide an explanation for not voting, or to advise the ECQ if they did vote, prompting the ECQ to investigate further.

Depending on the information provided, the ECQ can opt to take no further action if the elector provides a valid and sufficient excuse for not voting or evidence that they did in fact cast a vote. However, if the elector fails to respond to the ECQ's correspondence, or provides an excuse that is not deemed sufficient, further action, such as issuing a penalty infringement notice, may be taken.

# Review of informal ballot papers

At Queensland State elections and by-elections, electors must choose their representatives using the full preferential voting system. To cast a formal vote in these elections, electors must number every box on the ballot paper in their order of preference. In accordance with section 123 of the *Electoral Act 1992*, if 'a ballot paper does not have effect to indicate a vote, it is an informal ballot paper' and will not contribute towards the election result. At most elections, a portion of the ballots cast will be informal.

Informal voting offers important insights into the elector's engagement with, and understanding of, electoral processes. Noting the Inala and Ipswich West State by-elections were held concurrently with the 2024 local government elections, electors participating in the by-elections were required to use multiple voting systems.

In Inala, optional preferential voting was used to elect the mayor and councillor for the relevant local government area, while full preferential voting was required for the State by-election. Ipswich West electors were required to use three different voting systems, optional preferential voting to elect their mayor, first-past-the-post to elect their divisional councillors and full preferential voting for the State by-election.

The ECQ conducted an analysis of approximately 4,500 informal ballot papers for the Inala and Ipswich West State by-elections to identify whether electors intentionally or unintentionally cast an informal ballot. This was achieved through a process of reviewing and distributing each informal ballot paper into 15 categories, eight of which assume the ballot was intentionally informal and seven which assume the ballot was unintentionally informal.

It is important to note that it is not always possible to definitively ascertain electors' intentions in casting an informal ballot, and in those instances, the review makes educated assumptions based on the content of each ballot paper. While accepting these limitations, this review provides useful insight in informal voting patterns and informs future strategies aimed at increasing formal voting.

## Methodology

The majority of informal ballot papers cast for each electorate at the State by-elections were organised into 15 categories that were classed as either 'assumed intentional' or 'assumed unintentional'.

The categories and their definitions are listed in the table on the following page.

## Categories and definitions

### Assumed intentional

Blank	Ballot papers that have been left blank.
Drawings	Ballot papers with drawings.
Writing – protest voting	Writing on ballot papers that protests voting (against compulsory voting, voting makes no difference, against the system etc).
Writing – protest candidate choices	Writing on ballot papers that protests the candidate choices at the election, dissatisfaction with choices or knowledge of choices.
Writing – other protest	Ballot papers with other written protests.
Intentional defective numbering / marks	Ballot papers with intentional defective numbering that cannot be counted / or defective markings (ticks or crosses).
Fragments	Ballot papers that have been ripped up and placed in the ballot box by the elector.
Other – intentional	Any other ballot papers deemed to be intentionally informal that do not fit within the other intentional categories.

### Assumed unintentional

Numbers 1 only – just voted one	Ballot papers where the elector allocated preferences for only one candidate, but not all as required for full preferential voting elections.
Numbers insufficient – but more than one	Ballot papers where the elector allocated preferences for more than one candidate, but not all as required for full preferential voting elections.
Numbers – unclear order of preferences	Ballot papers where it is not possible to determine a clear order of preferences, either due to factors such as repeated or skipped numbers or illegible handwriting.
Ticks and crosses – unintentional	Ballot papers with a cross or tick next to the candidates' names instead of numbering and clearly preferencing all candidates as required for full preferential voting elections.
Voter identifiable	Ballot papers that contain any writing or mark that identify the elector are informal in accordance with section 123(1)(b) of the <i>Electoral Act 1992</i> .
Other – unintentional	Any other ballot papers deemed to be unintentionally informal that do not fit within the other unintentional categories.
Administrative error – formal	Ballot papers thought to be formal.

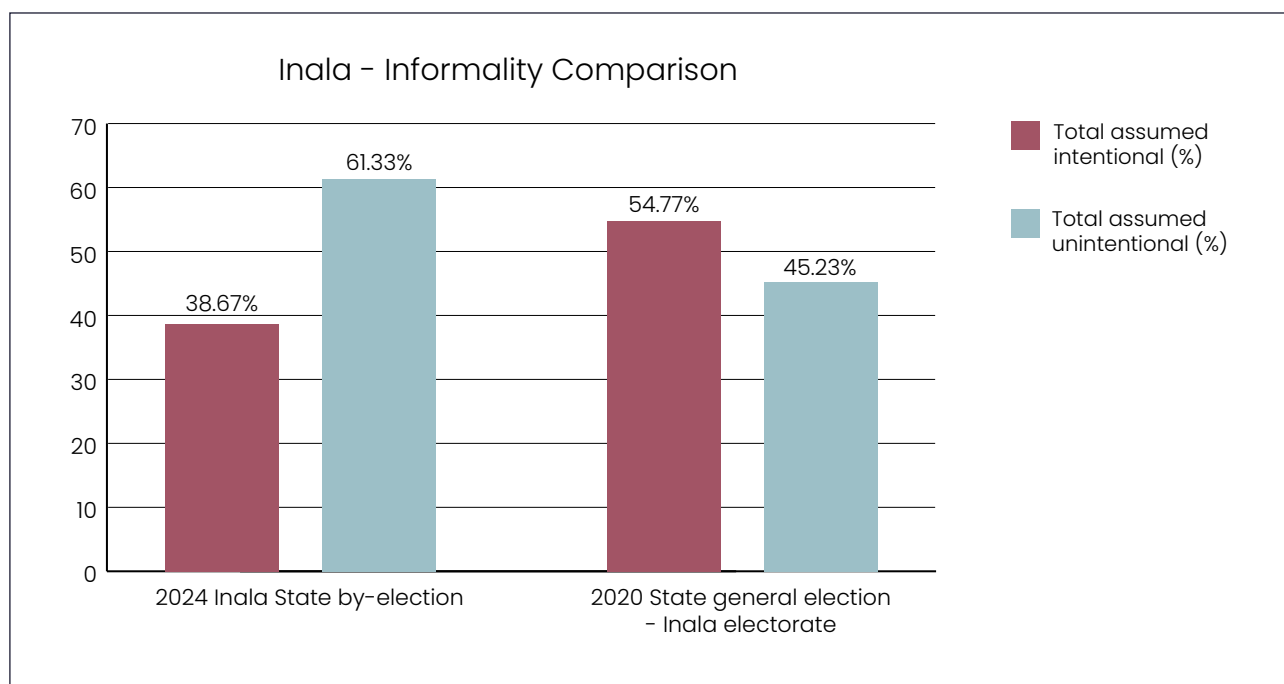
## Inala informality review

Informal voting in the 2024 Inala State by-election increased to 8.74 per cent from 4.90 per cent at the 2020 State general election, an increase of 3.84 per cent.

The results of the informality review found that assumed intentional informal voting accounted for 38.67 per cent of informal ballot papers,

while 61.33 per cent were assumed to be unintentionally informal.

This marks a change from the 2020 State general election, where intentional informal voting accounted for 54.77 per cent of informal ballot papers and unintentional informal voting accounted for 45.23 per cent.



The categorisation of informal ballot papers from the Inala State by-election revealed the following information:

- ▶ Close to 61 per cent of unintentional informal voting was the result of electors failing to preference the candidates on their ballot paper properly.
  - The 'Numbers 1 only – just voted one' category accounted for the majority of informal ballots cast in Inala, with approximately 38 per cent of informal ballots falling into this category.
  - The 'Number insufficient – but more than one' and 'Numbers – unclear order of preferences' categories accounted for approximately 12 and 11 per cent respectively.
- ▶ The 'Blank' category captured the most assumed intentional informal ballots,

accounting for approximately 16 per cent of all informal votes cast in the Inala State by-election, representing an increase from the approximately 10 per cent observed at the 2020 State general election.

- ▶ 'Intentional defective numbering / marks' also accounted for a large proportion of assumed intentional informal votes, representing approximately 12 per cent of informal ballots cast at the by-election.

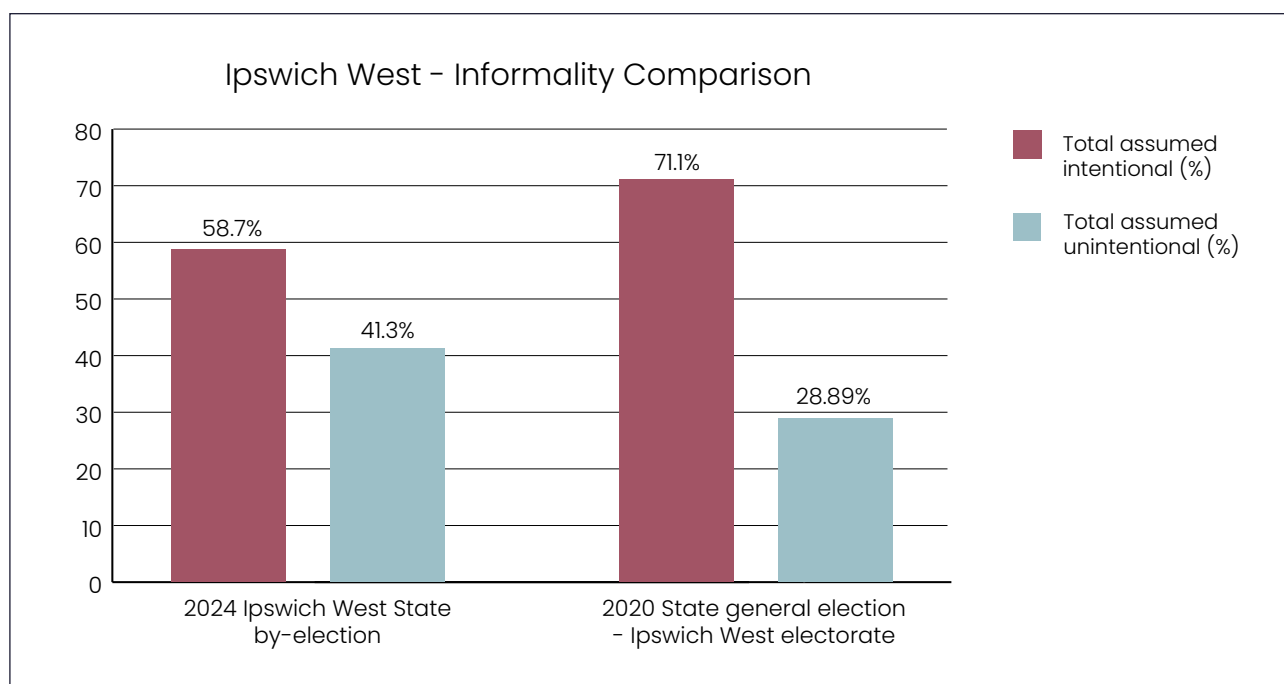
Noting the increase in unintentional informal voting at the by-election when compared to the 2020 State general election, and particularly noting most of the informal ballots were found to be the result of incorrect or incomplete preferencing of candidates, this indicates that the different voting systems at the March elections was likely a contributing factor in increasing informality at the Inala State by-election.

## Ipswich West informality review

Informal voting in the 2024 Ipswich West State by-election increased to 6.48 per cent from 4.01 per cent at the 2020 State general election, an increase of 2.47 per cent.

The results of the by-election informality review found that assumed intentional informal voting accounted for 58.70 per cent of informal ballot papers, while 41.30 per cent were assumed to be unintentionally informal.

This marks a change from the 2020 State general election, where intentional informal voting accounted for 71.10 per cent of informal ballot papers and unintentional informal voting accounted for 28.90 per cent. This also contrasts with the outcomes of the Inala State by-election informality review, which found the majority of informal ballot papers (61.33 per cent) were assumed to be unintentionally informal.



The categorisation of informal ballot papers from the Ipswich West by-election revealed the following information:

- ▶ Approximately 40 per cent of unintentional informal voting was the result of electors failing to preference the candidates on their ballot paper properly.
  - The 'Numbers 1 only – just voted one' category accounted for approximately 33 per cent of informal ballots in Ipswich West, which represented an increase from the approximately 10 per cent observed at the 2020 State general election.
  - The 'Number insufficient – but more than one' and 'Numbers – Unclear Order of Preferences' categories accounted for approximately five and two per cent respectively.

- ▶ The 'Blank' category captured the most assumed intentional informal votes, accounting for approximately 29 per cent of all informal votes cast in the Ipswich West State by-election. This represented an increase from the approximately 22 per cent observed at the 2020 State general election.
- ▶ The 'Intentional defective numbering / marks' and 'Other – intentional' categories also contributed approximately nine and 10 per cent respectively towards assumed intentional informality.

While assumed intentional informal voting remained higher than unintentional informal voting in Ipswich West, the intentional categories representing protest votes or drawings accounted for very few of the informal ballots cast.



As with the results in Inala, there was a notable increase in unintentional informal voting in Ipswich West when compared to the 2020 State general election informality review. Noting Ipswich West electors would have

needed to use three different voting systems at the March 2024 State by-election and local government elections, this indicates that different voting systems were a likely a contributing factor in increasing informality.

## Conclusions

Informal voting in the Inala and Ipswich West State by-elections increased substantially from the 2020 State general election, from 4.90 per cent to 8.74 per cent in Inala and 4.01 per cent to 6.48 per cent in Ipswich West.

The informal ballot paper review of the 2020 State general election<sup>1</sup> found that approximately 64 per cent of informal ballots cast across the 74 electorates reviewed were assumed to be intentional. Informal voting at the Ipswich West State by-election followed a similar trend, with close to 59 per cent of informal ballots found to be intentionally cast.

Interestingly, this differed in the Inala State by-election, where the majority of informal ballots were assumed to be unintentionally cast (61.33 per cent), with electors not preferencing all candidates on the ballot paper as required under the full preferential voting system for State elections.

It is noted that a significant proportion of Inala's population use a language other than English when compared against the national and state average.<sup>2</sup> This factor combined with the use of two different voting systems at the 2024 March elections, may have resulted in increased informal voting at the Inala State by-election. This inference is also supported by the fact that unintentional informality significantly increased at the Inala State by-election when compared against unintentional informality in the Inala electorate at the 2020 State general election (45.23 per cent).

While this may be attributable to many different factors, the by-elections being held alongside the local government quadrennial elections, where different voting systems applied, appears to have been a contributing factor to the increased levels of informality.

The ECQ utilises the outcomes of informality reviews to identify opportunities and strategies to address unintentional informality by targeting and improving electors' understanding of formal voting. The ECQ will review informal ballots in the Inala and Ipswich West electorates following the 2024 State general election, to monitor informal voting trends in these electorates.

<sup>1</sup> See informal ballot paper review in [2020 State General Election: Report on the Election](#)

<sup>2</sup> Australian Bureau of Statistics – 2021 Census - <https://www.abs.gov.au/census/find-census-data/quickstats/2021/SED30036>



# Appendices

## **Appendix A** – By-election writs and results notices

Inala writ .....	22
Ipswich West writ.....	24
Elected candidate gazette notice – Inala.....	26
Elected candidate gazette notice – Ipswich West.....	27

## **Appendix B** – Statutory notices

Register of political parties .....	28
Register of candidates – Inala.....	29
Register of candidates – Ipswich West.....	30
Polling booth and early voting notice.....	31
Declared institutions (mobile polling) voting notice – Inala.....	32
Declared institutions (mobile polling) voting notice – Ipswich West.....	33

## **Appendix C** – Media campaign

Social media campaign.....	34
Print and online advertising campaign.....	35

## **Appendix D** – First preference count and distribution of preferences

First preference count by booth – Inala.....	36
First preference count by booth – Ipswich West.....	37
Full distribution of preferences by booth – Inala .....	38
Full distribution of preferences by booth – Ipswich West .....	39
Summary of distribution of preferences – Inala.....	40
Summary of distribution of preferences – Ipswich West .....	41

**Inala writ**

STATE OF QUEENSLAND

*Electoral Act 1992*

*Writ for Election*

*Charles the Third, by the Grace of God, King of Australia and His other Realms and Territories, Head of the Commonwealth.*

**To the Electoral Commission of Queensland**

I, Jeannette Rosita Young AC PSM, Governor -

- (i) direct that you proceed according to the law to an election of a Member of the Legislative Assembly of Queensland for the Electoral District of Inala;
- (ii) appoint -

Tuesday, the thirtieth day of January 2024 to be the day of issue of this Writ;  
Monday, the fifth day of February 2024 to be the cut-off day for electoral rolls for the election;

Tuesday, the thirteenth day of February 2024 to be the cut-off day for the nomination of candidates for the election;

Saturday, the sixteenth day of March 2024 to be the polling day; and

Monday, the twenty-second day of April 2024 for the return of this Writ.



***Signed and sealed with the Public Seal of the State on 30 January 2024.***

***By Command***

RECORDED in the Register of Patents, No. 53, page 59, on 30 January 2024.

Clerk of the Executive Council

**IT IS HEREBY CERTIFIED THAT:**

Margaret Ellen NIGHTINGALE..... was duly elected a Member of the Legislative Assembly of Queensland for the Electoral District of Inala by virtue of the within Writ.

  
Electoral Commission of Queensland

Received 27th March 2024.

  
Governor.

**Ipswich West writ**

STATE OF QUEENSLAND

*Electoral Act 1992*

*Writ for Election*

*Charles the Third, by the Grace of God, King of Australia and His other Realms and Territories, Head of the Commonwealth.*

**To the Electoral Commission of Queensland**

I, Jeannette Rosita Young AC PSM, Governor -

- (i) direct that you proceed according to the law to an election of a Member of the Legislative Assembly of Queensland for the Electoral District of Ipswich West;
- (ii) appoint -

Tuesday, the thirtieth day of January 2024 to be the day of issue of this Writ;  
Monday, the fifth day of February 2024 to be the cut-off day for electoral rolls for the election;  
Tuesday, the thirteenth day of February 2024 to be the cut-off day for the nomination of candidates for the election;  
Saturday, the sixteenth day of March 2024 to be the polling day; and  
Monday, the twenty-second day of April 2024 for the return of this Writ.



*Signed and sealed with the Public Seal of the State on 30 January 2024.*

*By Command*

RECORDED in the Register of Patents, No. 53, page 60 , on 30 January 2024.

Clerk of the Executive Council

**IT IS HEREBY CERTIFIED THAT:**

Darren William ZANOWI..... was duly elected a Member of the Legislative Assembly of Queensland for the Electoral District of Ipswich West by virtue of the within Writ.

  
Electoral Commission of Queensland

**Elected candidate gazette notice – Inala**

[503]



# Queensland Government Gazette

**EXTRAORDINARY**

**PUBLISHED BY AUTHORITY**

ISSN 0155-9370

**VOL. 395]**

**WEDNESDAY 27 MARCH 2024**

**[No. 70**

**Elected Candidate Notice  
2024 INALA STATE BY-ELECTION  
SATURDAY 16 MARCH 2024**



On 30 January 2024, a Writ was issued for a by-election for the Queensland electorate of Inala. The by-election was held on Saturday, 16 March 2024.

In accordance with section 132(2)(c) of the *Electoral Act 1992*, this notice advises that the following candidate has been duly elected as a Member of the Legislative Assembly.

Electoral district	Elected candidate	Declaration date
Inala	Margaret Ellen NIGHTINGALE	27 March 2024

In accordance with section 132(2)(a) of the *Electoral Act 1992*, the elected candidate's name has been written on the Writ issued for the by-election, which in accordance with section 132(2)(b) of the *Electoral Act*, was returned to the Her Excellency the Governor on Wednesday, 27 March 2024.

**E:** [ecg@ecg.qld.gov.au](mailto:ecg@ecg.qld.gov.au) | **P:** 1300 881 665 | **W:** [ecg.qld.gov.au](http://ecg.qld.gov.au)  
**P:** GPO Box 1393 Brisbane QLD 4001 | **A:** Level 20, Eagle Street Brisbane QLD 4000

© The State of Queensland 2024  
Copyright protects this publication. Except for purposes permitted by the Copyright Act, reproduction by whatever means is prohibited without prior written permission. Inquiries should be addressed to:  
Gazette Advertising, PO Box 10817, Brisbane Adelaide Street QLD 4000.

BRISBANE  
27 March 2024

**Elected candidate gazette notice – Ipswich West**

[497]



# Queensland Government Gazette

**EXTRAORDINARY**

**PUBLISHED BY AUTHORITY**

ISSN 0155-9370

**VOL. 395]**

**FRIDAY 22 MARCH 2024**

**[No. 67**

**Elected Candidate Notice  
2024 IPSWICH WEST STATE BY-ELECTION  
SATURDAY 16 MARCH 2024**



On 30 January 2024, a Writ was issued for a by-election for the Queensland electorate of Ipswich West. The by-election was held on Saturday, 16 March 2024.

In accordance with section 132(2)(c) of the *Electoral Act 1992*, this notice advises that the following candidate has been duly elected as a Member of the Legislative Assembly.

Electoral district	Elected candidate	Declaration date
Ipswich West	Darren ZANOW	22 March 2024

In accordance with section 132(2)(a) of the *Electoral Act 1992*, the elected candidate's name has been written on the Writ issued for the by-election, which in accordance with section 132(2)(b) of the *Electoral Act*, was returned to Her Excellency the Governor on Friday, 22 March 2024.

**E:** [ecq@ecq.qld.gov.au](mailto:ecq@ecq.qld.gov.au) | **P:** 1300 881 665 | **W:** [ecq.qld.gov.au](http://ecq.qld.gov.au)  
**P:** GPO Box 1393 Brisbane QLD 4001 | **A:** Level 20, Eagle Street Brisbane QLD 4000

© The State of Queensland 2024  
Copyright protects this publication. Except for purposes permitted by the Copyright Act, reproduction by whatever means is prohibited without prior written permission. Inquiries should be addressed to:  
Gazette Advertising, PO Box 10817, Brisbane Adelaide Street QLD 4000.

BRISBANE  
22 March 2024

## Register of political parties

[151]



# Queensland Government Gazette

**EXTRAORDINARY**

**PUBLISHED BY AUTHORITY**

ISSN 0155-9370

**VOL. 395]**

**TUESDAY 30 JANUARY 2024**

**[No. 26**



**Register of Political Parties**  
**2024 INALA AND IPSWICH WEST STATE BY-ELECTIONS**  
**SATURDAY 16 MARCH 2024**

In accordance with section 79(2) of the *Electoral Act 1992*, below is a list of the names of all registered political parties and the names of their respective registered officers which are included in the register of political parties maintained by the Electoral Commission of Queensland (ECQ).

Political Party	Registered Abbreviation	Registered Officer
<b>Australian Labor Party (State of Queensland)</b>	Australian Labor Party	Katherine Flanders
<b>Queensland Greens</b>	The Greens	Lenore Keough
<b>Liberal National Party of Queensland</b>	LNP	Benjamin Riley
<b>Pauline Hanson's One Nation Queensland Division</b>	One Nation	Pauline Hanson
<b>Katter's Australian Party (KAP)</b>	KAP	Shannan Boschen
<b>Animal Justice Party (Queensland)</b>	Animal Justice Party	Anna Nikolic
<b>Health Environment Accountability Rights Transparency (HEART)</b>	HEART Party	Rebecca McCredie
<b>Legalise Cannabis Qld (Party)</b>	No abbreviation registered	Ian Zunker * (Deputy Registered Officer)

\* Acting as the Registered Officer due to passing of the Registered Officer

To view the register, visit the ECQ website: <https://www.ecq.qld.gov.au/donations-and-expenditure-disclosure/register>.

**E:** [ecq@ecq.qld.gov.au](mailto:ecq@ecq.qld.gov.au) | **P:** 1300 881 665 | **W:** [ecq.qld.gov.au](http://ecq.qld.gov.au)

**P:** GPO Box 1393 Brisbane QLD 4001 | **A:** Level 20, Eagle Street Brisbane QLD 4000



**Register of candidates – Inala**



**Register of Candidates**  
**2024 INALA STATE BY-ELECTION**  
**SATURDAY 16 MARCH 2024**

In accordance with section 101 of the *Electoral Act 1992*, this register includes the information, and a summary of the content of any statement, set out in the nomination form of each of the candidates nominated for the 2024 Inala State by-election.

Ballot paper order	Candidate name	Registered political party	Enrolled suburb	Occupation
1	NGUYEN, Linh	Independent	Springfield Lakes	Community Worker
2	SIMPSON, Chris	Independent	Nukku	Project and Construction Manager
3	NIGHTINGALE, Margie	Australian Labor Party	Forest Lake	Teacher
4	YEN, Trang	LNP	South Brisbane	Public Service
5	QUINLAN, Nigel David	Legalise Cannabis Qld (Party)	Durack	Artist
6	HERNANDEZ, Nayda	Independent	Forest Lake	Business and Community Development Manager
7	SIDHU, Navdeep Singh	The Greens	Springfield Lakes	Mechanic
8	CARROLL, Edward	Independent	Goodna	Storeperson

All candidates in this register have consented to be nominated for election in the electoral district of Inala.

If a registered political party appears adjacent to a candidate’s name, this means the party’s registered officer has endorsed the candidate.

**E:** [ecq@ecq.qld.gov.au](mailto:ecq@ecq.qld.gov.au) | **P:** 1300 881 665 | **W:** [ecq.qld.gov.au](http://ecq.qld.gov.au)  
**P:** GPO Box 1393 Brisbane QLD 4001 | **A:** Level 20, Eagle Street Brisbane QLD 4000

**Register of candidates – Ipswich West**



**Register of Candidates**  
**2024 IPSWICH WEST STATE BY-ELECTION**  
**SATURDAY 16 MARCH 2024**

In accordance with section 101 of the *Electoral Act 1992*, this register includes the information, and a summary of the content of any statement, set out in the nomination form of each of the candidates nominated for the 2024 Ipswich West State by-election.

Ballot paper order	Candidate name	Registered political party	Enrolled suburb	Occupation
1	LINDSAY, Melody	Legalise Cannabis Qld (Party)	Nambour	Party Vice-President
2	ZANOW, Darren	LNP	North Booval	Company Manager Director
3	BONE, Mark Marston	One Nation	Richlands	Self-employed
4	BOURNE, Wendy	Australian Labor Party	Rosewood	Policy Advisor

All candidates in this register have consented to be nominated for election in the electoral district of Ipswich West.

If a registered political party appears adjacent to a candidate's name, this means the party's registered officer has endorsed the candidate.

**E:** [ecq@ecq.qld.gov.au](mailto:ecq@ecq.qld.gov.au) | **P:** 1300 881 665 | **W:** [ecq.qld.gov.au](http://ecq.qld.gov.au)  
**P:** GPO Box 1393 Brisbane QLD 4001 | **A:** Level 20, Eagle Street Brisbane QLD 4000

**Polling booth and early voting notice**

**Polling Booth and Early Voting Notice**  
**2024 INALA AND IPSWICH WEST STATE BY-ELECTIONS**  
**SATURDAY 16 MARCH 2024**



---

The Inala and Ipswich West State by-elections will be held on Saturday, 16 March 2024. **Voting is compulsory.**

In accordance with sections 98 and 99A of the *Electoral Act 1992*, the Electoral Commission of Queensland (ECQ) notifies and declares that election day polling booths and early voting centres will be available over the period specified below.

**Early voting**

- Early voting centres open Monday, 4 March to Friday, 15 March 2024.
- Voters may cast ordinary or declaration votes for the by-election at an early voting centre.

**Election day voting**

- Polling booths open from 8am to 6pm on election day, Saturday 16 March 2024.
- Voters may cast ordinary or declaration votes at a polling booth on election day.

For a list of locations and hours of operation, see the ECQ website or phone 1300 881 665.

**E:** [ecq@ecq.qld.gov.au](mailto:ecq@ecq.qld.gov.au) | **P:** 1300 881 665 | **W:** [ecq.qld.gov.au](http://ecq.qld.gov.au)  
**P:** GPO Box 1393 Brisbane QLD 4001 | **A:** Level 20, Eagle Street Brisbane QLD 4000

---

**Declared institutions (mobile polling) voting notice – Inala**

**Declared Institutions (Mobile Polling) Voting Notice  
2024 INALA STATE BY-ELECTION  
SATURDAY 16 MARCH 2024**



---

In accordance with section 99(4) and 99(12) of the *Electoral Act 1992*, the Electoral Commission of Queensland notifies and declares the following institutions to be mobile polling booths for the 2024 Inala State by-election.

Only residents and patients of the institutions listed below are permitted to vote at the institutions during the appointed date and time. The Returning Officer for the Inala by-election will advise the registered institution regarding the voting date and operating hours.

Institution name	Address
Forest Lake Lodge	12 Tewantin Way, Forest Lake, QLD 4078

**E:** [ecq@ecq.qld.gov.au](mailto:ecq@ecq.qld.gov.au) | **P:** 1300 881 665 | **W:** [ecq.qld.gov.au](http://ecq.qld.gov.au)  
**P:** GPO Box 1393 Brisbane QLD 4001 | **A:** Level 20, Eagle Street Brisbane QLD 4000

---

**Declared institutions (mobile polling) voting notice – Ipswich West**



**Declared Institutions (Mobile Polling) Voting Notice**  
**2024 IPSWICH WEST STATE BY-ELECTION**  
**SATURDAY 16 MARCH 2024**

In accordance with section 99(4) and 99(12) of the *Electoral Act 1992*, the Electoral Commission of Queensland notifies and declares the following institutions to be mobile polling booths for the 2024 Ipswich West State by-election.

Only residents and patients of the institutions listed below are permitted to vote at the institutions during the appointed dates and times. The Returning Officer for the Ipswich West by-election will advise the registered institutions regarding voting dates and operating hours.

Institution name	Address
Bundaleer Lodge Nursing Home	114 Holdsworth Rd, North Ipswich, QLD 4305
Cabanda Care Inc	59 John St, Rosewood, QLD 4340
Brassall Village Aged Care Facility	9 Charles St, Brassall, QLD 4305

**E:** [ecq@ecq.qld.gov.au](mailto:ecq@ecq.qld.gov.au) | **P:** 1300 881 665 | **W:** [ecq.qld.gov.au](http://ecq.qld.gov.au)  
**P:** GPO Box 1393 Brisbane QLD 4001 | **A:** Level 20, Eagle Street Brisbane QLD 4000

# Appendix C – Media campaign

## Social Media campaign

Electoral Commission QUEENSLAND

**Apply for a postal vote now.**

Inala and Ipswich West State by-elections | [ecq.qld.gov.au](https://ecq.qld.gov.au)

My local vote

Postal vote applications close on 4 March.

Electoral Commission QUEENSLAND

Your first vote is kind of a big deal!  
Don't forget to enrol.

Electoral Commission QUEENSLAND

**Declared 27.03.24**

Inala State by-election | [ecq.qld.gov.au](https://ecq.qld.gov.au)

Electoral Commission QUEENSLAND

**Declared 22.03.24**

Ipswich West State by-election | [ecq.qld.gov.au](https://ecq.qld.gov.au)

Electoral Commission QUEENSLAND

**Today is election day.**


Inala and Ipswich West State by-elections | [ecq.qld.gov.au](https://ecq.qld.gov.au)

Print and online advertising campaign

## Inala State by-election

### Voter information


Election day is **Saturday 16 March 2024**.  
Early voting from **Monday 4 March to Friday 15 March 2024** (except weekends).



For all election and voting information go to [ecq.qld.gov.au](http://ecq.qld.gov.au)

**Find out more**

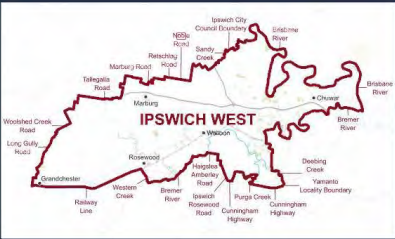
Remember, voting is compulsory



## Ipswich West State by-election

### Voter information


Election day is **Saturday 16 March 2024**.  
Early voting from **Monday 4 March to Friday 15 March 2024** (except weekends).




For all election and voting information go to [ecq.qld.gov.au](http://ecq.qld.gov.au)

**Find out more**

Remember, voting is compulsory



## Ipswich West and Inala State by-election




### Election information


**By-elections are being held in the Inala and Ipswich West State electorates to elect two new Members of Parliament on Saturday, 16 March 2024.**

**Vote in person**

**Early voting** is from 9am-5pm from Monday, 4 March to Thursday, 14 March, and from 9am-6pm on Friday, 15 March (excluding weekends).  
**Election day voting** is from 8am-6pm on **Saturday, 16 March 2024**.



Check if you need to vote in this by-election.




Check your nearest polling booth.

IPSWICH WEST STATE BY-ELECTION	INALA STATE BY-ELECTION
<p><b>Early voting centres:</b></p> <ul style="list-style-type: none"> <li>Ipswich City Mall, 22 Nicholas Street, Ipswich</li> <li>Brisbane City Hall, Ann Street, Brisbane</li> <li>Whitehill Church, 219 Whitehill Road, Raceview</li> </ul> <p><b>Election day booths:</b></p> <ul style="list-style-type: none"> <li>Brassall Congregational Church, Brassall</li> <li>Ipswich State High School, Brassall</li> <li>Haigslea State School, Haigslea</li> <li>Karalee State School, Karalee</li> <li>Leichhardt State School, Leichhardt</li> <li>Marburg State School, Marburg</li> <li>Ipswich North State School, North Ipswich</li> <li>Immaculate Heart Primary School, Leichhardt</li> <li>Pine Mountain Hall, Pine Mountain</li> <li>St Joseph's School, North Ipswich</li> <li>Rosewood State High School, Rosewood</li> <li>Tivoli State School, Tivoli</li> <li>Walloon State School, Walloon</li> <li>Amberley District State School, Yamanto</li> <li>Brisbane City Hall, Brisbane</li> <li>Grandchester State School, Grandchester</li> <li>Ipswich State High School, Brassall</li> </ul>	<p><b>Early voting centres:</b></p> <ul style="list-style-type: none"> <li>Returning Officer's Office: 99 Kelliher Road, Richlands</li> <li>Returning Officer's Office: 1/18 Sudbury Street, Darra</li> <li>Brisbane City Hall, Ann Street, Brisbane</li> </ul> <p><b>Election day booths:</b></p> <ul style="list-style-type: none"> <li>Carole Park State School, Carole Park</li> <li>Durack State School, Inala</li> <li>Forest Lake State School, Forest Lake</li> <li>Forest Lake State High School, Forest Lake</li> <li>Grand Avenue State School, Forest Lake</li> <li>Inala State School, Durack</li> <li>Richlands East State School, Inala</li> <li>Serviceton South State School, Inala</li> <li>Brisbane City Hall, Brisbane</li> </ul> <p><i>This list is subject to change, please scan the QR code for updated locations.</i></p>

**Remember, voting is compulsory**

For more information visit [ecq.qld.gov.au](http://ecq.qld.gov.au) or phone 1300 881 665

## Ipswich West and Inala State by-election




### Election information

**A by-election is being held in the Inala and Ipswich West State electorates to elect new Members of Parliament on Saturday, 16 March 2024.**


**Vote in person**

**Early voting** is from 9am-5pm from Monday, 4 March to Thursday, 14 March, and from 9am-6pm on Friday, 15 March (excluding weekends).  
**Election day voting** is from 8am-6pm on **Saturday, 16 March 2024**.

For more information visit [ecq.qld.gov.au](http://ecq.qld.gov.au) or phone 1300 881 665.



Check if you need to vote in this by-election.



Check your nearest polling booth.

IPSWICH WEST	INALA
<p><b>Early voting centres:</b></p> <ul style="list-style-type: none"> <li>Ipswich City Mall, 22 Nicholas Street, Ipswich</li> <li>Brisbane City Hall, Ann Street, Brisbane</li> <li>Whitehill Church, 219 Whitehill Road, Raceview</li> </ul> <p><b>Election day booths:</b></p> <ul style="list-style-type: none"> <li>Brassall Congregational Church, Brassall</li> <li>Ipswich State High School, Brassall</li> <li>Haigslea State School, Haigslea</li> <li>Karalee State School, Karalee</li> <li>Leichhardt State School, Leichhardt</li> <li>Marburg State School, Marburg</li> <li>Ipswich North State School, North Ipswich</li> <li>Immaculate Heart Primary School, Leichhardt</li> <li>Pine Mountain Hall, Pine Mountain</li> <li>St Joseph's School, North Ipswich</li> <li>Rosewood State High School, Rosewood</li> <li>Tivoli State School, Tivoli</li> <li>Walloon State School, Walloon</li> <li>Amberley District State School, Yamanto</li> <li>Brisbane City Hall, Brisbane</li> <li>Grandchester State School, Grandchester</li> <li>Ipswich State High School, Brassall</li> </ul>	<p><b>Early voting centres:</b></p> <ul style="list-style-type: none"> <li>Returning Officer's Office: 99 Kelliher Road, Richlands</li> <li>Returning Officer's Office: 1/18 Sudbury Street, Darra</li> <li>Brisbane City Hall, Ann Street, Brisbane</li> </ul> <p><b>Election day booths:</b></p> <ul style="list-style-type: none"> <li>Carole Park State School, Carole Park</li> <li>Durack State School, Inala</li> <li>Forest Lake State School, Forest Lake</li> <li>Forest Lake State High School, Forest Lake</li> <li>Grand Avenue State School, Forest Lake</li> <li>Inala State School, Durack</li> <li>Richlands East State School, Inala</li> <li>Serviceton South State School, Inala</li> <li>Brisbane City Hall, Brisbane</li> </ul> <p><i>This list is subject to change, please scan the QR code for updated locations.</i></p>

**Remember, voting is compulsory**

## Appendix D - First preference count and distribution of preferences

### First preference count by booth - Inala

Polling booth	NGUYEN, Linh		SIMPSON, Chris		NIGHTINGALE, Margie		YEN, Trang		QUINLAN, Nigel David		HERNANDEZ, Nayda		SIDHU, Navdeep Singh		CARROLL, Edward		Formal votes		Informal votes		Total votes
	Votes	%	Votes	%	Votes	%	Votes	%	Votes	%	Votes	%	Votes	%	Votes	%	Votes	%	Votes	%	
Brisbane CBD	3	7.31%	1	2.44%	13	31.71%	12	29.27%	2	4.88%	0	0.00%	9	21.95%	1	2.44%	41	82.00%	9	18.00%	50
Brisbane CBD Early Voting Centre	23	7.35%	2	0.64%	115	36.74%	92	29.39%	6	1.92%	6	1.92%	66	21.08%	3	0.96%	313	92.60%	25	7.40%	338
Carole Park	20	9.43%	3	1.42%	69	32.55%	73	34.43%	17	8.02%	6	2.83%	19	8.96%	5	2.36%	212	90.99%	21	9.01%	233
Darra Early Voting Centre	88	13.46%	18	2.75%	246	37.62%	158	24.16%	37	5.66%	32	4.89%	60	9.17%	15	2.29%	654	85.94%	107	14.06%	761
Durack	119	11.52%	22	2.13%	370	35.82%	298	28.85%	47	4.55%	29	2.81%	128	12.39%	20	1.93%	1033	87.10%	153	12.90%	1186
Forest Lake	109	4.50%	95	3.92%	955	39.40%	695	28.67%	96	3.96%	90	3.71%	313	12.91%	71	2.93%	2424	92.63%	193	7.37%	2617
Forest Lake East	121	6.85%	42	2.38%	717	40.60%	466	26.39%	66	3.74%	121	6.85%	199	11.27%	34	1.92%	1766	89.83%	200	10.17%	1966
Forest Lake South	118	5.66%	112	5.37%	667	31.99%	704	33.77%	82	3.93%	118	5.66%	217	10.41%	67	3.21%	2085	89.48%	245	10.52%	2330
In Person Declaration Votes	21	6.27%	23	6.86%	99	29.55%	100	29.85%	16	4.78%	12	3.58%	56	16.72%	8	2.39%	335	94.37%	20	5.63%	355
Inala	205	13.39%	40	2.61%	512	33.44%	418	27.30%	83	5.42%	41	2.68%	203	13.26%	29	1.90%	1531	86.16%	246	13.84%	1777
Mobile Polling	5	20.84%	0	0.00%	11	45.83%	5	20.83%	0	0.00%	0	0.00%	1	4.17%	2	8.33%	24	92.31%	2	7.69%	26
Postal Declaration Votes	186	4.31%	106	2.46%	1920	44.56%	1387	32.19%	158	3.67%	130	3.02%	353	8.19%	69	1.60%	4309	93.01%	324	6.99%	4633
Returning Officer Inala	1112	11.46%	380	3.91%	3437	35.40%	2978	30.68%	308	3.17%	589	6.07%	765	7.88%	139	1.43%	9708	93.18%	710	6.82%	10418
Richlands East	178	12.13%	102	6.95%	481	32.79%	300	20.45%	69	4.70%	76	5.18%	226	15.41%	35	2.39%	1467	88.32%	194	11.68%	1661
Serviceton South	194	13.00%	39	2.61%	585	39.18%	362	24.25%	56	3.75%	69	4.62%	169	11.32%	19	1.27%	1493	89.35%	178	10.65%	1671
Telephone Voting	0	0.00%	0	0.00%	3	37.50%	2	25.00%	1	12.50%	0	0.00%	1	12.50%	1	12.50%	8	100.00%	0	0.00%	8
Telephone Voting - Early Voting	0	0.00%	1	2.86%	16	45.71%	9	25.71%	2	5.71%	1	2.86%	5	14.29%	1	2.86%	35	100.00%	0	0.00%	35
<b>Totals</b>	<b>2502</b>	<b>9.12%</b>	<b>986</b>	<b>3.60%</b>	<b>10216</b>	<b>37.23%</b>	<b>8059</b>	<b>29.37%</b>	<b>1046</b>	<b>3.81%</b>	<b>1320</b>	<b>4.81%</b>	<b>2790</b>	<b>10.17%</b>	<b>519</b>	<b>1.89%</b>	<b>27438</b>	<b>91.26%</b>	<b>2627</b>	<b>8.74%</b>	<b>30065</b>



## Appendix D – First preference count and distribution of preferences

### First preference count by booth – Ipswich West

Polling booth	LINDSAY, Melody		ZANOW, Darren		BONE, Mark Marston		BOURNE, Wendy		Formal votes		Informal votes		Total votes
	Votes	Percentage	Votes	Percentage	Votes	Percentage	Votes	Percentage	Votes	Percentage	Votes	Percentage	
Brassall	251	16.35%	664	43.26%	108	7.04%	512	33.35%	1535	93.43%	108	6.57%	1643
Brassall North	337	17.85%	693	36.71%	214	11.33%	644	34.11%	1888	92.64%	150	7.36%	2038
Brisbane CBD	7	31.82%	9	40.91%	2	9.09%	4	18.18%	22	95.65%	1	4.35%	23
Brisbane CBD Early Voting Centre	5	10.42%	16	33.33%	4	8.33%	23	47.92%	48	90.57%	5	9.43%	53
Grandchester	19	16.97%	43	38.39%	21	18.75%	29	25.89%	112	86.82%	17	13.18%	129
Haigslea	37	8.92%	250	60.24%	51	12.29%	77	18.55%	415	93.47%	29	6.53%	444
In Person Declaration Votes	72	21.62%	119	35.74%	34	10.21%	108	32.43%	333	95.69%	15	4.31%	348
Karalee	332	14.34%	1057	45.66%	253	10.93%	673	29.07%	2315	94.07%	146	5.93%	2461
Leichhardt	272	29.96%	188	20.70%	133	14.65%	315	34.69%	908	88.59%	117	11.41%	1025
Marburg	62	12.06%	240	46.69%	63	12.26%	149	28.99%	514	94.14%	32	5.86%	546
Mobile Polling	12	9.68%	52	41.93%	12	9.68%	48	38.71%	124	96.88%	4	3.12%	128
North Ipswich	119	18.77%	165	26.02%	75	11.83%	275	43.38%	634	93.10%	47	6.90%	681
One Mile	178	19.54%	205	22.50%	126	13.83%	402	44.13%	911	86.60%	141	13.40%	1052
Pine Mountain	69	10.30%	356	53.13%	77	11.49%	168	25.08%	670	93.84%	44	6.16%	714
Postal Declaration Votes	523	11.64%	1910	42.52%	505	11.24%	1554	34.60%	4492	96.52%	162	3.48%	4654
Raceview Early Voting Centre	264	10.73%	1036	42.10%	247	10.03%	914	37.14%	2461	94.73%	137	5.27%	2598
Raymonds Hill	204	18.53%	356	32.33%	134	12.17%	407	36.97%	1101	93.38%	78	6.62%	1179
Returning Officer Ipswich West	683	11.98%	2344	41.09%	515	9.03%	2162	37.90%	5704	94.37%	340	5.63%	6044
Rosewood	216	15.58%	505	36.44%	160	11.54%	505	36.44%	1386	89.77%	158	10.23%	1544
Telephone Voting	3	25.00%	0	0.00%	0	0.00%	9	75.00%	12	92.31%	1	7.69%	13
Telephone Voting - Early Voting	1	2.33%	13	30.23%	3	6.98%	26	60.46%	43	100.00%	0	0.00%	43
Tivoli	228	16.73%	500	36.68%	147	10.79%	488	35.80%	1363	92.91%	104	7.09%	1467
Walloon	197	14.71%	541	40.41%	169	12.62%	432	32.26%	1339	92.60%	107	7.40%	1446
Yamanto	211	17.54%	414	34.41%	153	12.72%	425	35.33%	1203	92.11%	103	7.89%	1306
<b>Totals</b>	<b>4302</b>	<b>14.57%</b>	<b>11676</b>	<b>39.55%</b>	<b>3206</b>	<b>10.86%</b>	<b>10349</b>	<b>35.04%</b>	<b>29533</b>	<b>93.52%</b>	<b>2046</b>	<b>6.48%</b>	<b>31579</b>

## Appendix D – First preference count and distribution of preferences

### Full distribution of preferences by booth – Inala

Polling booth	NIGHTINGALE, Margie		YEN, Trang		Total votes
	Votes	Percentage	Votes	Percentage	
Brisbane CBD	23	56.10%	18	43.90%	41
Brisbane CBD Early Voting Centre	193	61.66%	120	38.34%	313
Carole Park	111	52.36%	101	47.64%	212
Darra Early Voting Centre	401	61.31%	253	38.69%	654
Durack	592	57.31%	441	42.69%	1033
Forest Lake	1440	59.41%	984	40.59%	2424
Forest Lake East	1065	60.31%	701	39.69%	1766
Forest Lake South	1122	53.81%	963	46.19%	2085
In Person Declaration Votes	185	55.22%	150	44.78%	335
Inala	874	57.09%	657	42.91%	1531
Mobile Polling	17	70.83%	7	29.17%	24
Postal Declaration Votes	2535	58.83%	1774	41.17%	4309
Returning Officer Inala	5171	53.27%	4537	46.73%	9708
Richlands East	899	61.28%	568	38.72%	1467
Serviceton South	890	59.61%	603	40.39%	1493
Telephone Voting	5	62.50%	3	37.50%	8
Telephone Voting - Early Voting	21	60.00%	14	40.00%	35
<b>Totals</b>	<b>15544</b>	<b>56.65%</b>	<b>11894</b>	<b>43.35%</b>	<b>27438</b>

## Appendix D – First preference count and distribution of preferences

### Full distribution of preferences by booth – Ipswich West

Polling booth	ZANOW, Darren		BOURNE, Wendy		Total votes
	Votes	Percentage	Votes	Percentage	
Brassall	850	55.37%	685	44.63%	1535
Brassall North	980	51.91%	908	48.09%	1888
Brisbane CBD	13	59.09%	9	40.91%	22
Brisbane CBD Early Voting Centre	21	43.75%	27	56.25%	48
Grandchester	67	59.82%	45	40.18%	112
Haigslea	310	74.70%	105	25.30%	415
In Person Declaration Votes	170	51.05%	163	48.95%	333
Karalee	1387	59.91%	928	40.09%	2315
Leichhardt	409	45.04%	499	54.96%	908
Marburg	313	60.89%	201	39.11%	514
Mobile Polling	72	58.06%	52	41.94%	124
North Ipswich	270	42.59%	364	57.41%	634
One Mile	361	39.63%	550	60.37%	911
Pine Mountain	437	65.22%	233	34.78%	670
Postal Declaration Votes	2484	55.30%	2008	44.70%	4492
Raceview Early Voting Centre	1339	54.41%	1122	45.59%	2461
Raymonds Hill	505	45.87%	596	54.13%	1101
Returning Officer Ipswich West	2981	52.26%	2723	47.74%	5704
Rosewood	729	52.60%	657	47.40%	1386
Telephone Voting	2	16.67%	10	83.33%	12
Telephone Voting - Early Voting	17	39.53%	26	60.47%	43
Tivoli	710	52.09%	653	47.91%	1363
Walloon	747	55.79%	592	44.21%	1339
Yamanto	627	52.12%	576	47.88%	1203
<b>Totals</b>	<b>15801</b>	<b>53.50%</b>	<b>13732</b>	<b>46.50%</b>	<b>29533</b>

**Summary of distribution of preferences – Inala**

Preference distribution	NGUYEN, Linh	SIMPSON, Chris	NIGHTINGALE, Margie	YEN, Trang	QUINLAN, Nigel David	HERNANDEZ, Nayda	SIDHU, Navdeep Singh	CARROLL, Edward	Exhausted	Votes remaining in count	Total formal votes
<b>First preference</b>	2502	986	10216	8059	1046	1320	2790	519		27438	27438
<b>CARROLL, Edward excluded</b>	55	113	61	37	46	85	122		0	519	519
<b>Total</b>	2557	1099	10277	8096	1092	1405	2912		0	27438	
<b>QUINLAN, Nigel David excluded</b>	108	136	214	157		147	330		0	1092	1092
<b>Total</b>	2665	1235	10491	8253		1552	3242		0	27438	
<b>SIMPSON, Chris excluded</b>	488		250	177		182	138		0	1235	1235
<b>Total</b>	3153		10741	8430		1734	3380		0	27438	
<b>HERNANDEZ, Nayda excluded</b>	472		337	520			405		0	1734	1734
<b>Total</b>	3625		11078	8950			3785		0	27438	
<b>NGUYEN, Linh excluded</b>			1478	1489			658		0	3625	3625
<b>Total</b>			12556	10439			4443		0	27438	
<b>SIDHU, Navdeep Singh excluded</b>			2988	1455					0	4443	4443
<b>Total</b>			15544	11894					0	27438	27438

## Appendix D – First preference count and distribution of preferences

### Summary of distribution of preferences – Ipswich West

Preference distribution	LINDSAY, Melody	ZANOW, Darren	BONE, Mark Marston	BOURNE, Wendy	Exhausted	Votes remaining in count	Total formal votes
First preference	4302	11676	3206	10349		29533	29533
BONE, Mark Marston excluded	1063	1529		614	0	3206	3206
Total	5365	13205		10963	0	29533	
LINDSAY, Melody excluded		2596		2769	0	5365	5365
Total		15801		13732	0	29533	29533



**Electoral  
Commission**  
QUEENSLAND

**Post:** GPO Box 1393  
BRISBANE QLD 4001

**Telephone:** 1300 881 665

**Email:** [ecq@ecq.qld.gov.au](mailto:ecq@ecq.qld.gov.au)